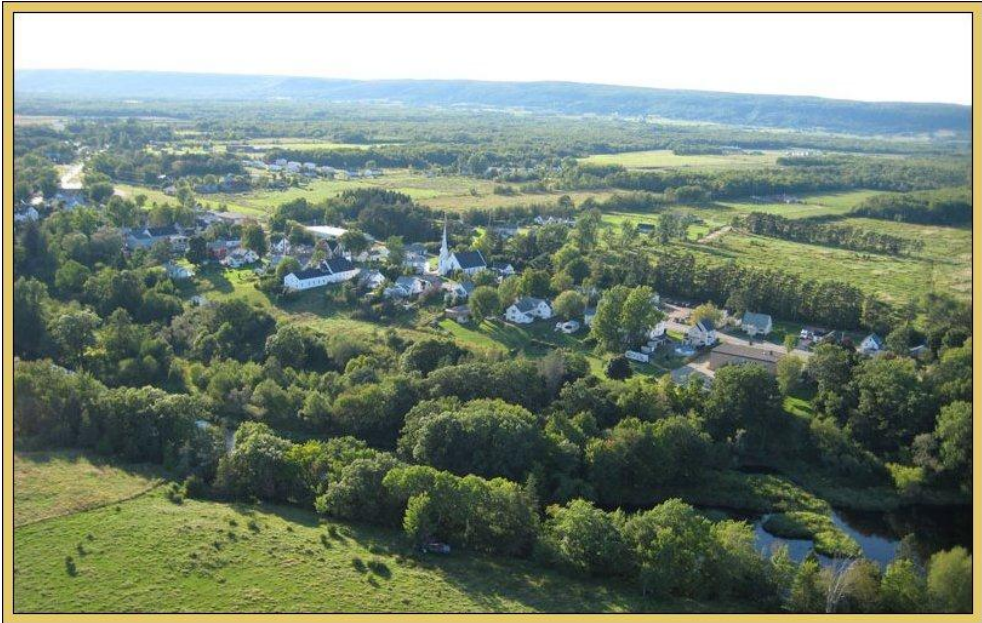




Village of Lawrencetown Source Water Protection Plan

December 10, 2012





Agenda

- **Purpose**
- **Groundwater Supply**
- **NSE Process**
- **Capture Zones**
- **Revised Boundary**
- **Land Use**
- **Potential Hazards/Risks**



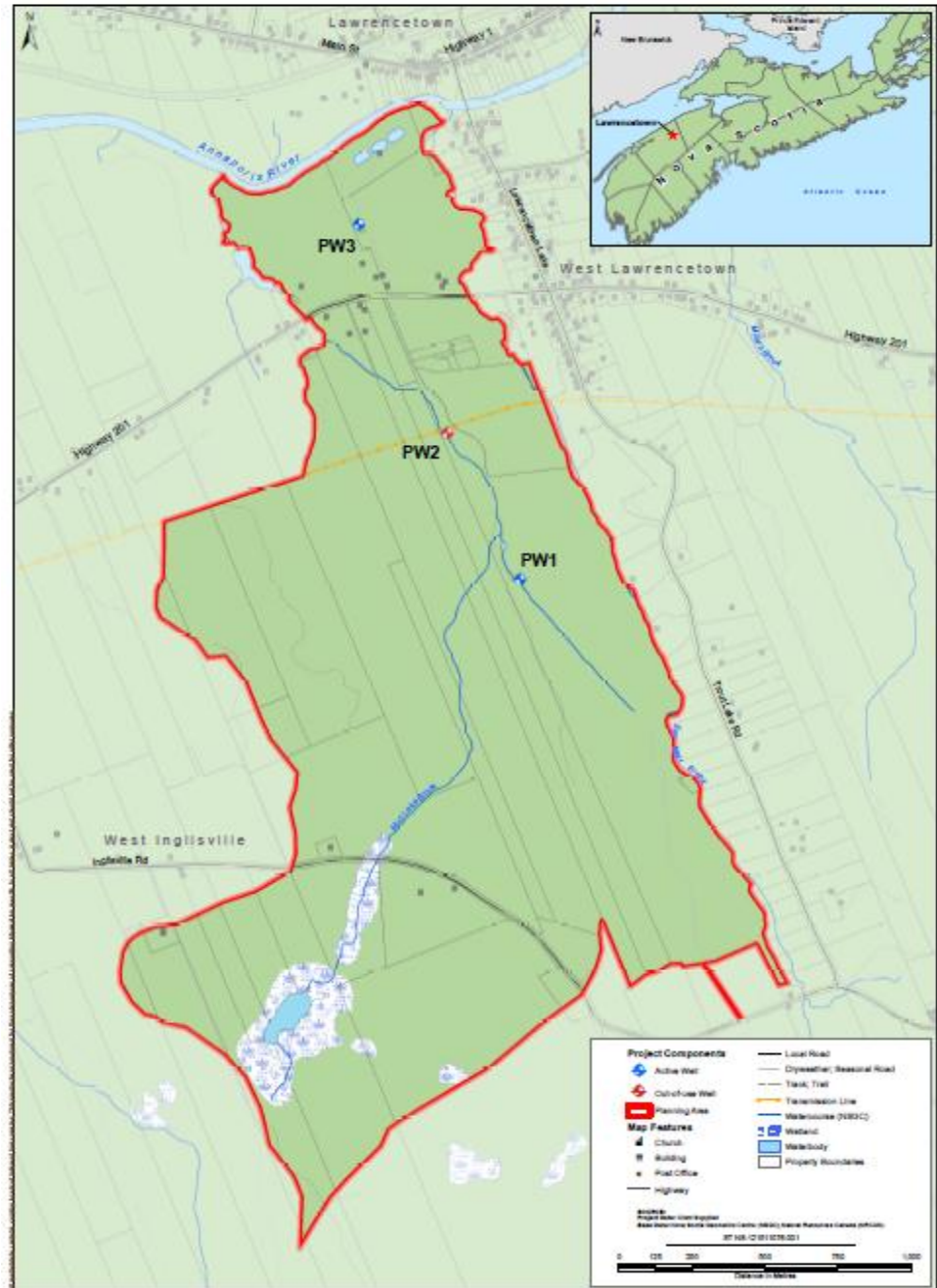
Our Purpose

To provide **professional assistance** with the development of a **Municipal Source Water Protection Plan** for a ground-water source water supply owned and operated by the **Village of Lawrencetown.**

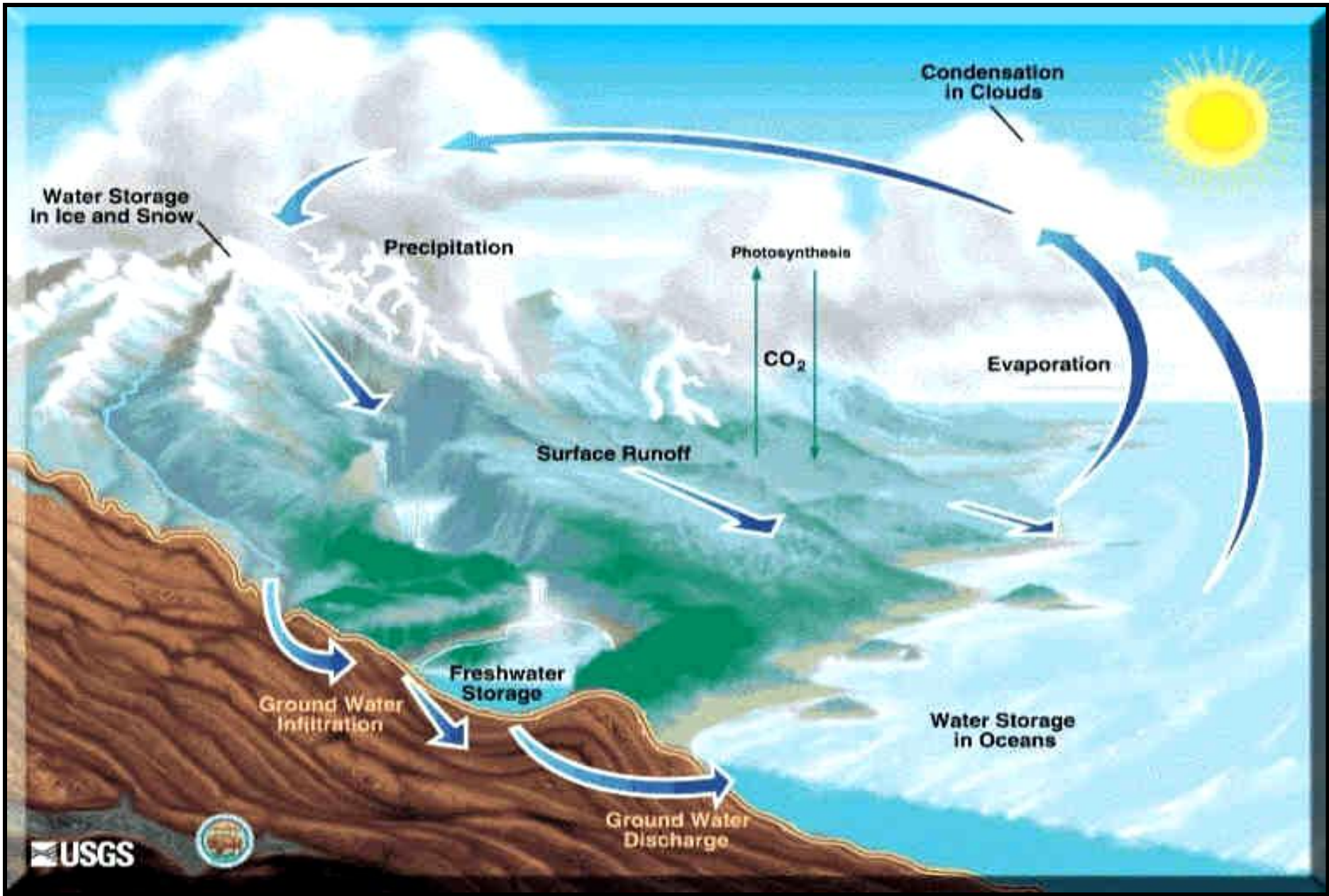


Overall Purpose

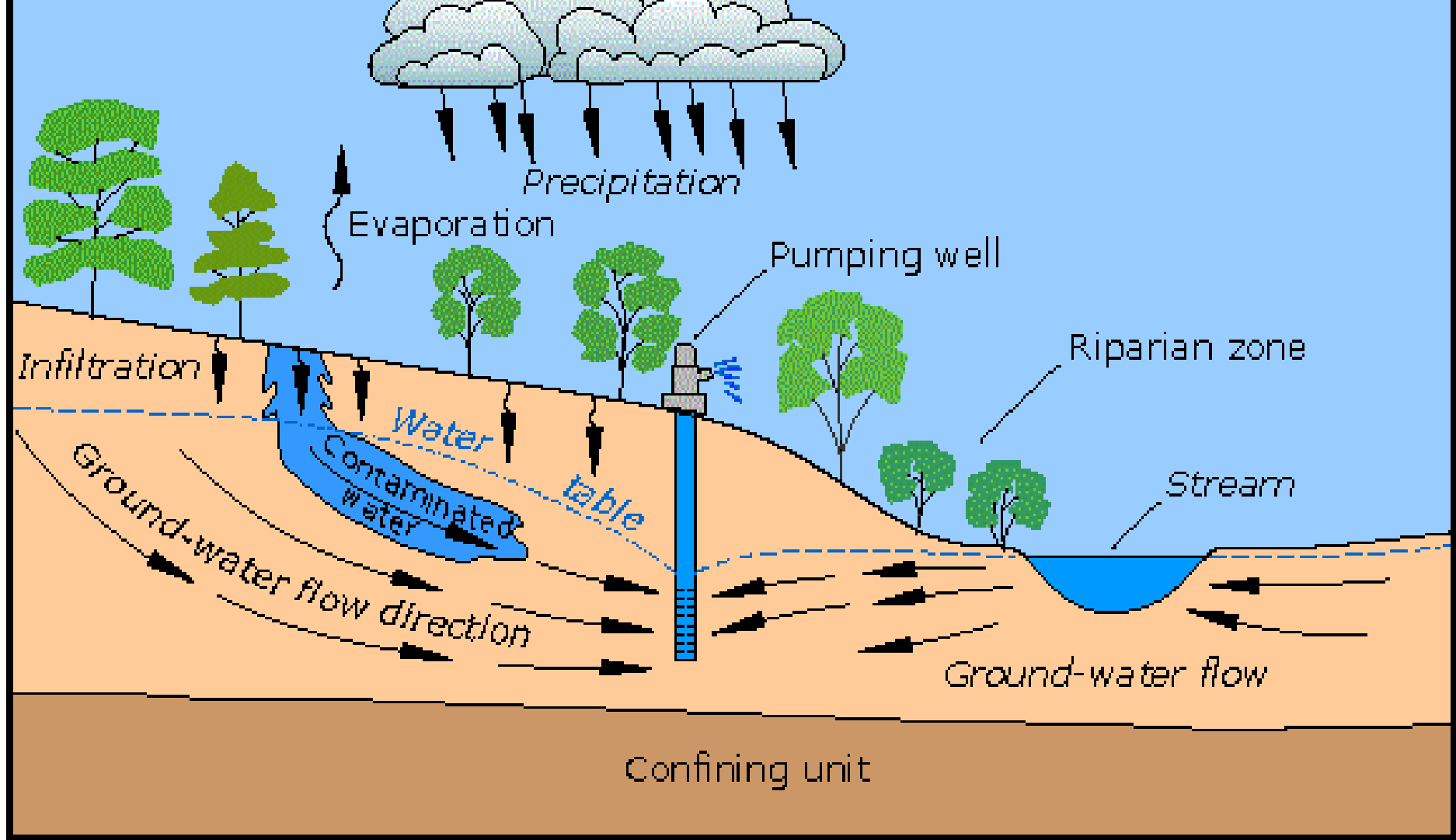
Protect your drinking water

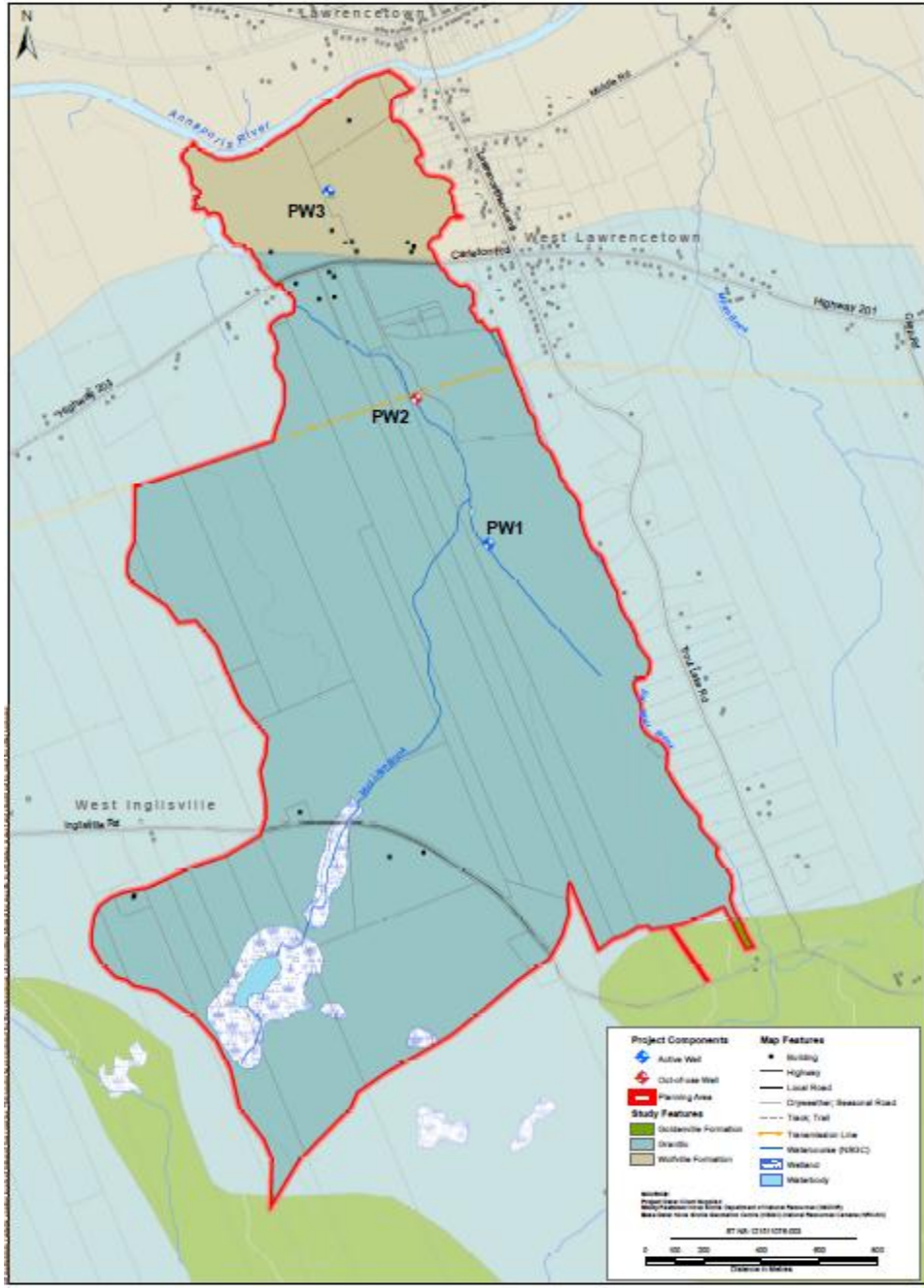


Author: K. Taylor	Village of Lawrencetown Source Water Protection Plan Study Area	Scale: 1
Version: 03/2016		Date: 03/31, 2015
Logo: [Logo]		Logo: [Logo]

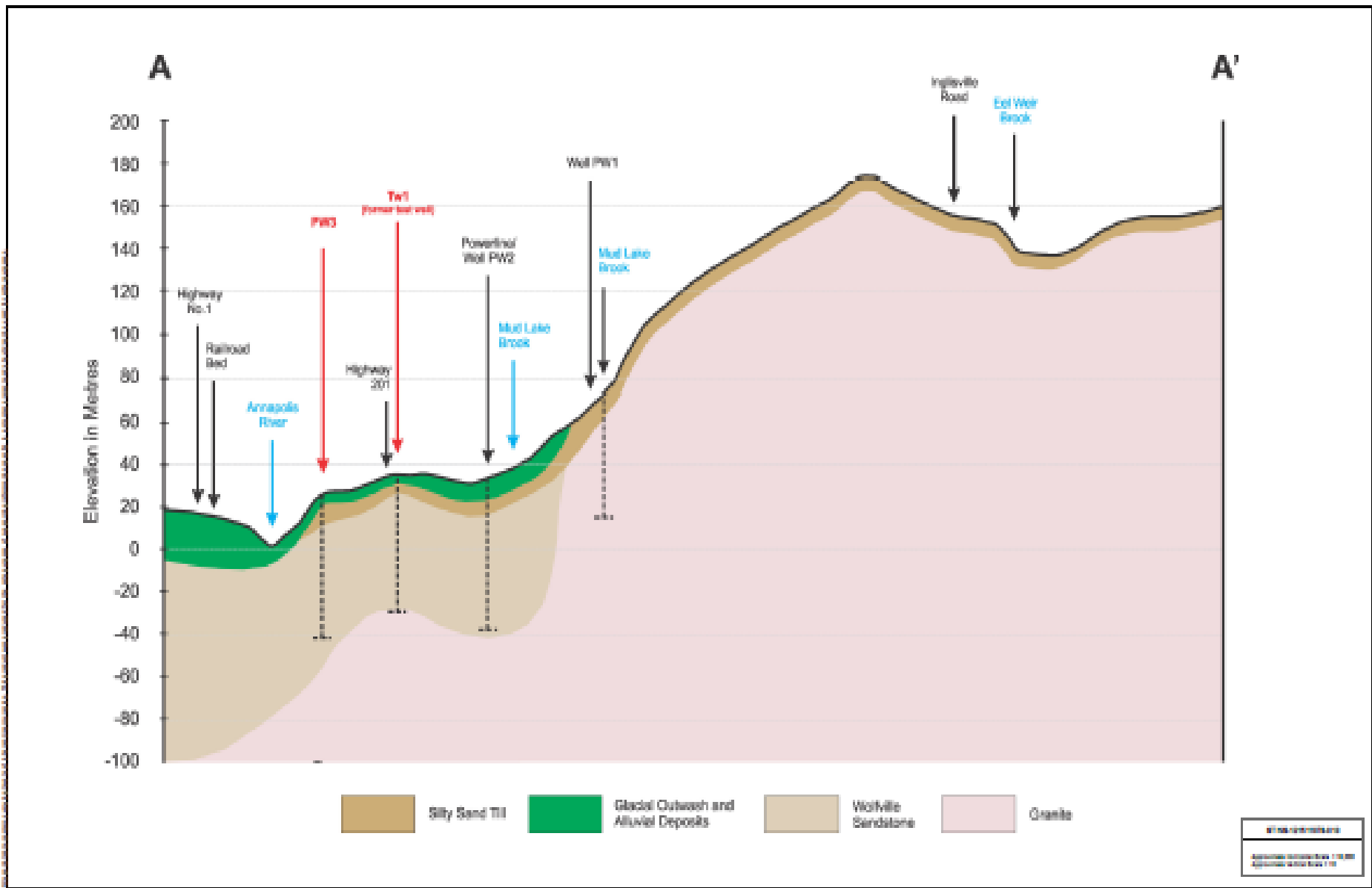


Ground-water quality





Prepared by K. Taylor	Village of Laurentown Source Water Protection Plan Bedrock Geology	Sheet No. 2
Reviewed by C. Shupe		Date Oct 31, 2012
Scale		



Author	K Taylor
Reviewer	C Shupe
Date	

Village of Lawrenceton Source Water Protection Plan

Conceptual North to South Geological Cross Section Through Study Area

Page	4
Date	Nov-28, 2012



Our Purpose

To provide **professional assistance** with the development of a **Municipal Source Water Protection Plan** for a ground-water source water supply owned and operated by the **Village of Lawrencetown** using NSE Guidelines.



NSE Guidelines

- **Step 1** – Form Committee
- **Step 2** – Delineate Boundary
- **Step 3** – Assess Risks
- **Step 4** – Management Plan
- **Step 5** – Monitor Results and Evaluate Plan



NSE Guidelines

- **Step 1 – Form Committee**
 - Terms of Reference
 - Stakeholder Engagement
 - Goals and Objectives



Step 1 Form Committee

MANDATE

The Committee will report to the Lawrencetown Village Commission and the members will be appointed by the Village Commission.

GENERAL

- The Committee will review and make recommendations on all activities affecting the source water protection area as requested by the Village Commission.
- The Committee may from time to time request individuals or groups to make representation to the Committee on matters affecting the source water protection area.
- The Committee will review and comment on water quality and quantity monitoring programs and other studies related to the source water protection area. All applicable water quality information available from member agencies shall be made available to the Committee.
- The Committee may liaise with government agencies not represented on the Committee with regards to matters affecting the source water protection area.
- The Committee will develop information and education programs about source water protection for local residents, land owners and other users of the area.
- The Committee will elect a Chair and Vice Chair.



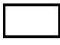

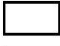
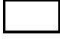
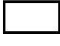
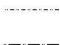



NSE Guidelines

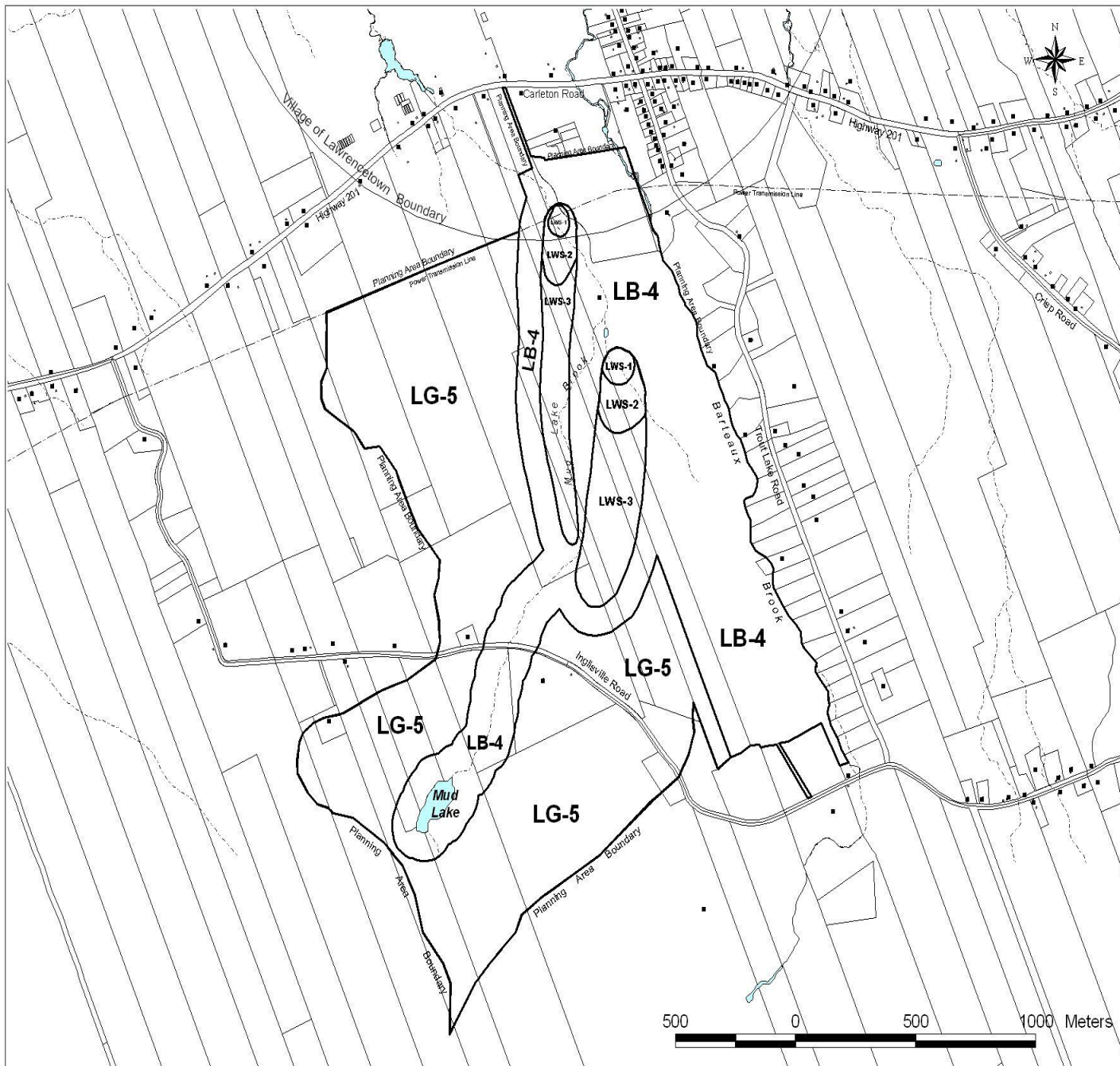
- **Step 2 – Delineate Boundary**
 - Identify and delineate 25 year capture area of PW3
 - Land ownership, development patterns and land use

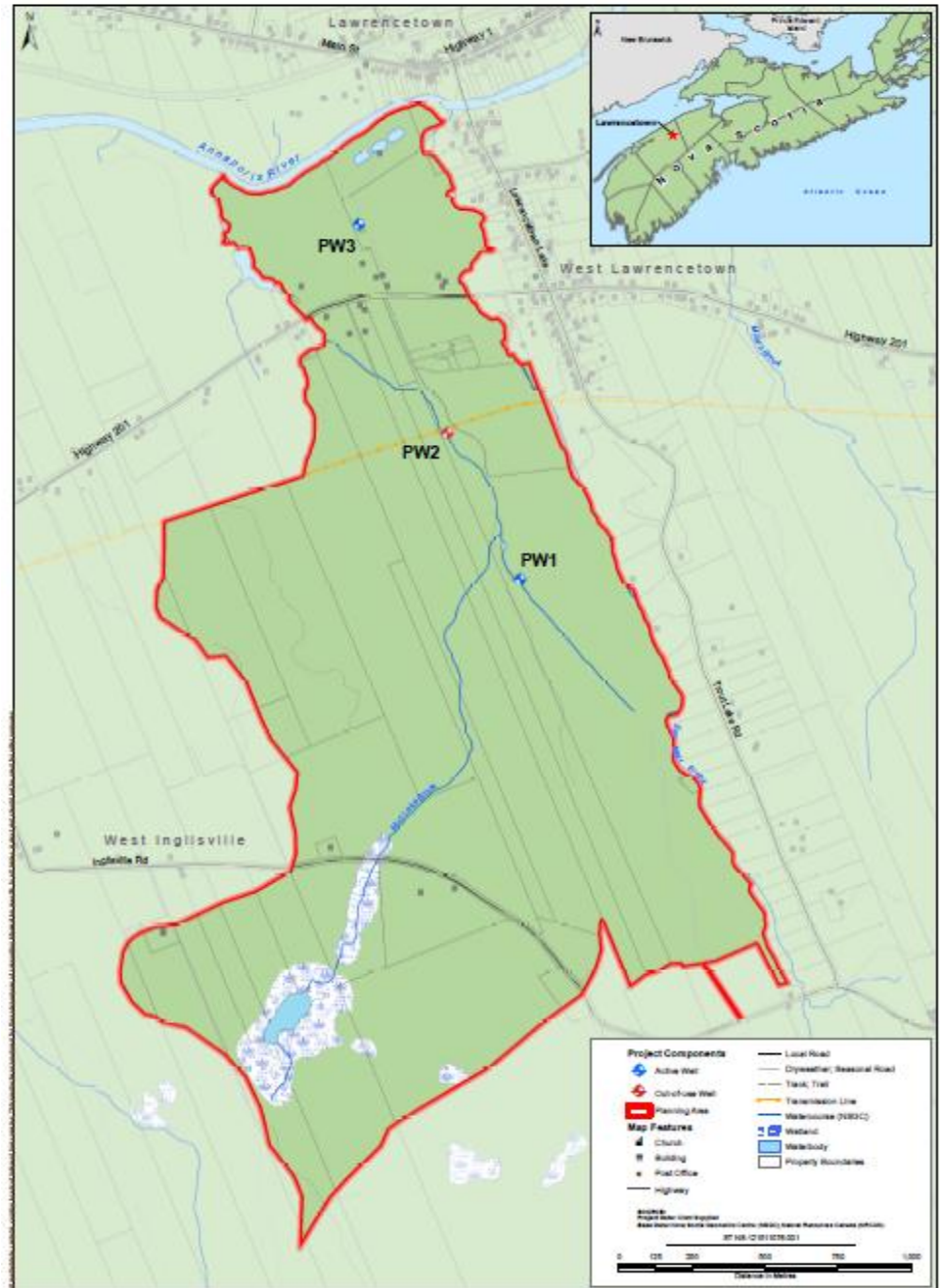
Lawrencetown Water Supply Area Land Use By-law

ZONING MAP Schedule "A"

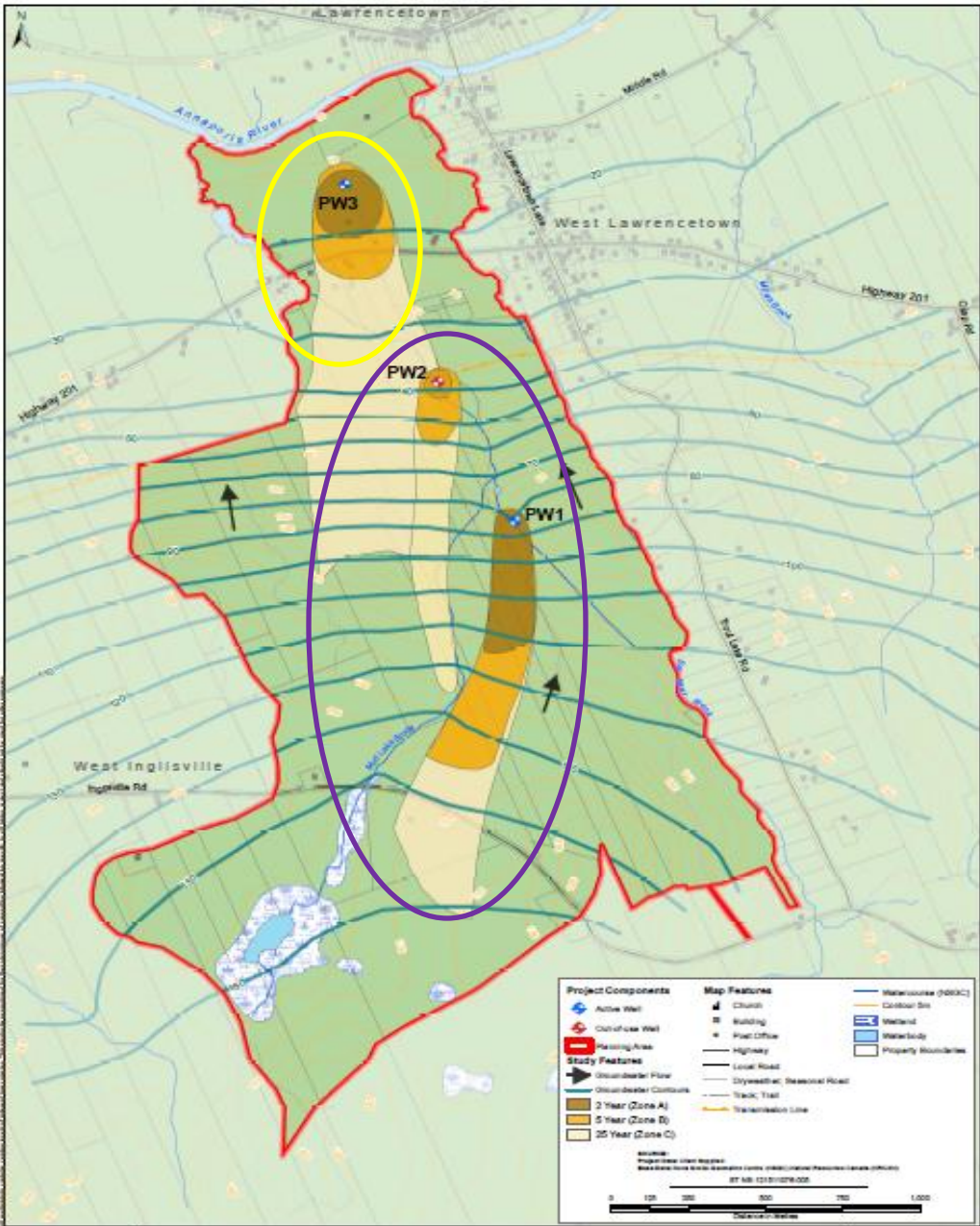
Legend

-  Lawrencetown Water Supply (LWS-1) Zone
-  Lawrencetown Water Supply (LWS-2) Zone
-  Lawrencetown Water Supply (LWS-3) Zone
-  Lawrencetown Buffer (LB-4) Zone
-  Lawrencetown General (LG-5) Zone
-  Brook/Stream
-  Power Line
-  Property Line
-  Civic Address Point



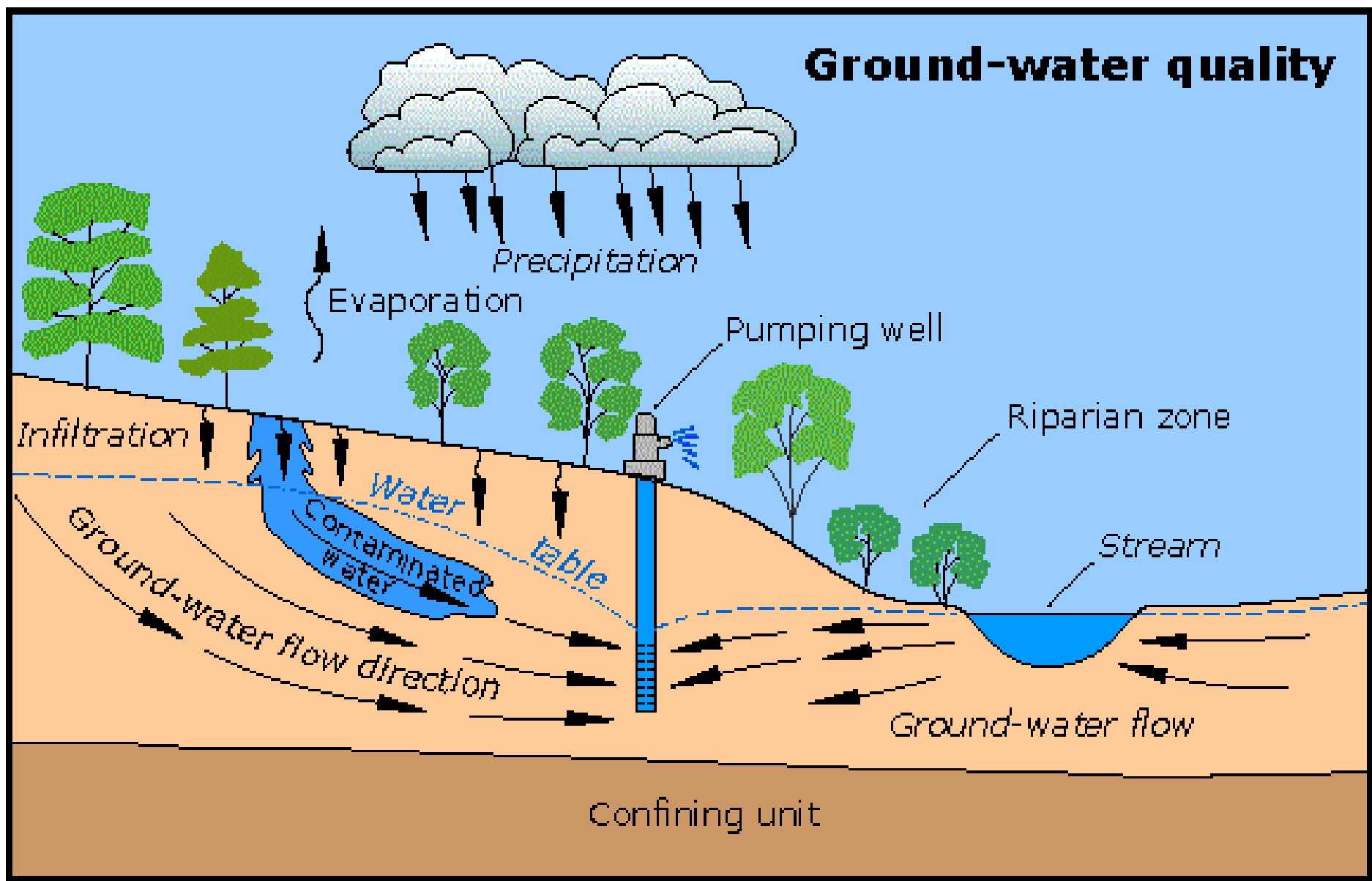


Author: K. Taylor	Village of Lawrencetown Source Water Protection Plan	Scale: 1
Map: © Mapbox		Date: Oct 31, 2012
Study Area		



Prepared by K. Sykes	Village of Lawrencetown Source Water Protection Plan Capture Zones	Drawn by C. Stupe	Date Oct 31, 2013
Title 		Scale 	
Author 		Revision 	

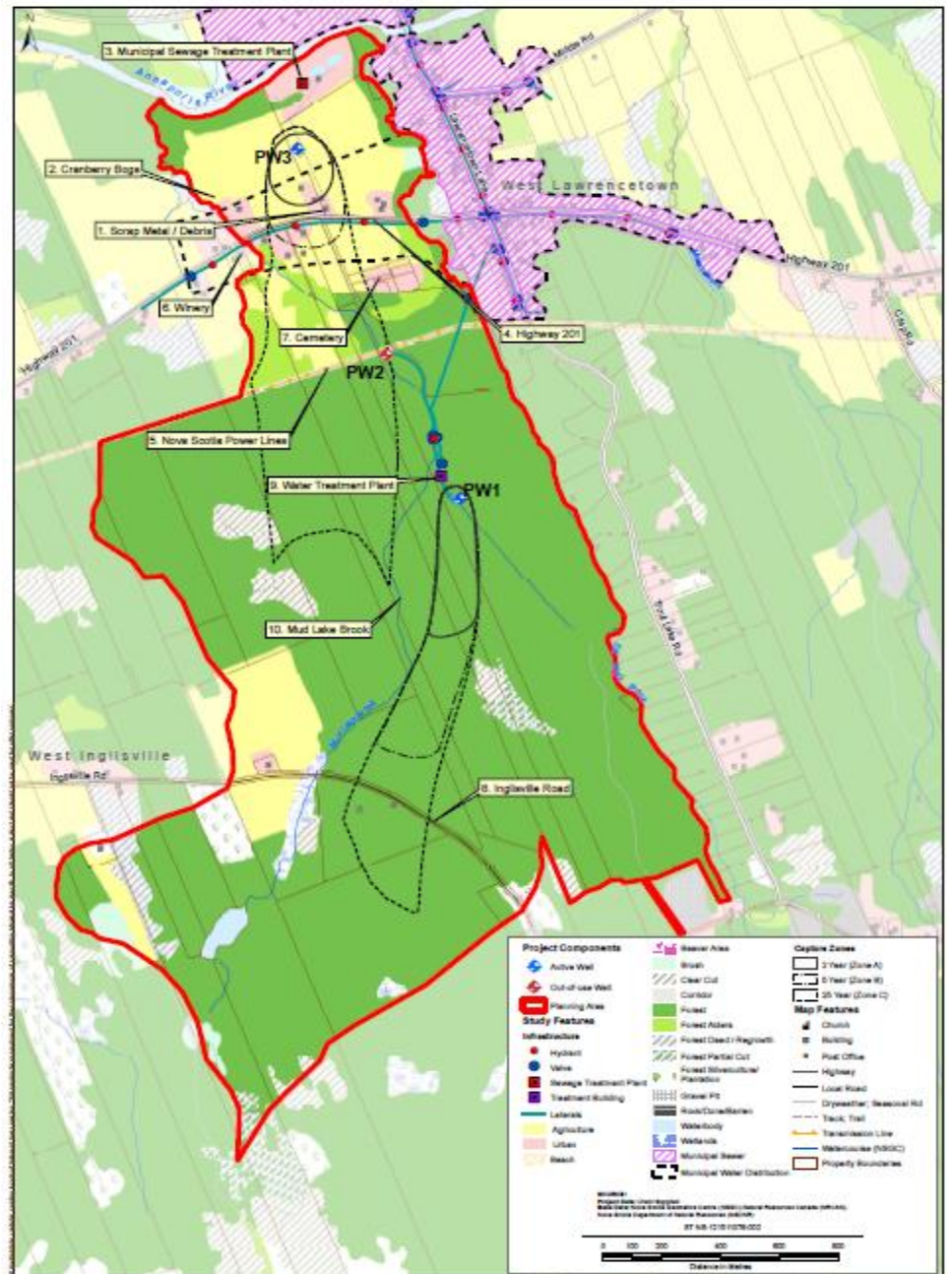
Ground-water quality



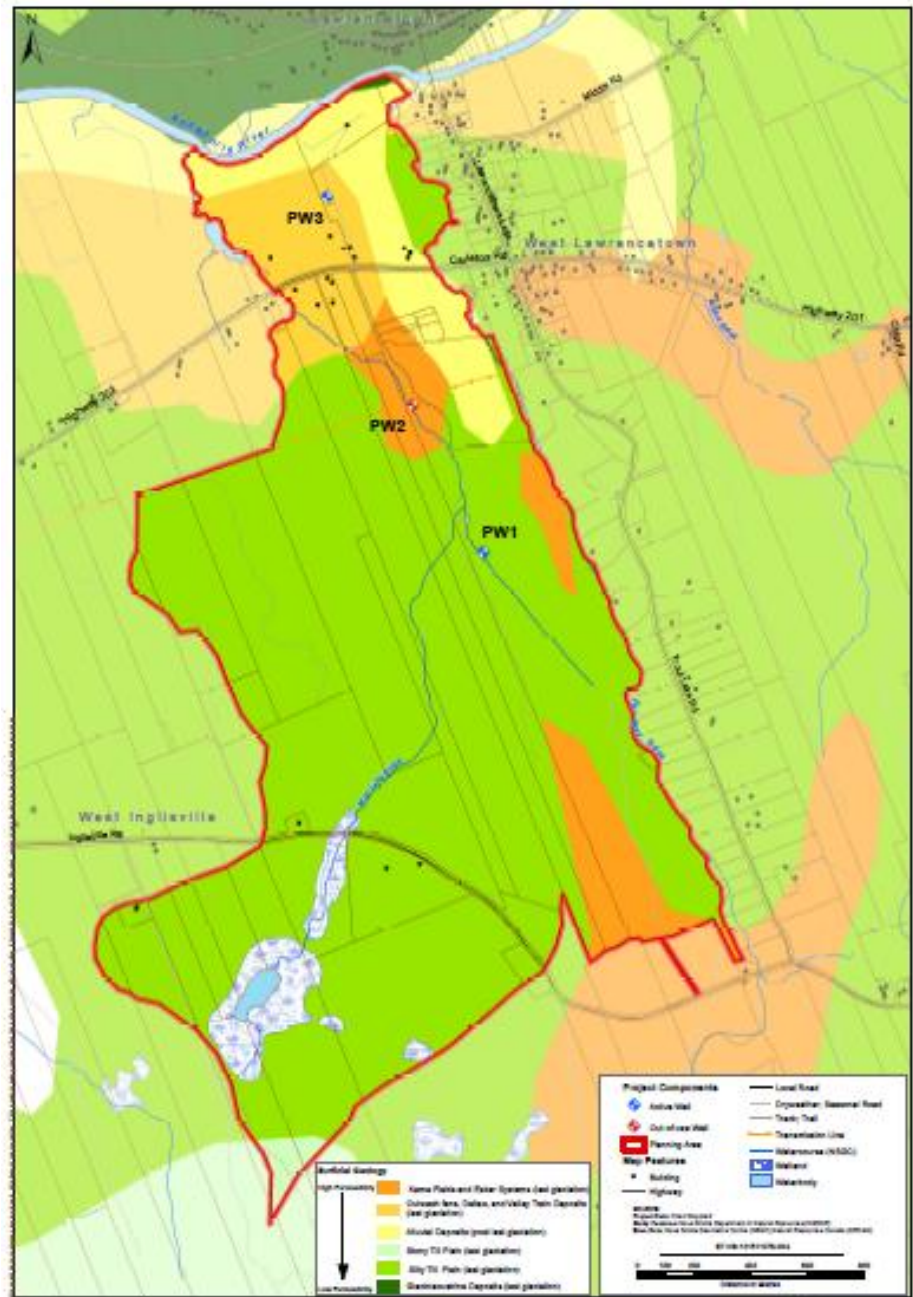


NSE Guidelines

- **Step 3 – Identify & Assess Risks**
 - Land ownership, development patterns and land use
 - Update Land Use Inventory (GIS Mapping)
 - Identify Hazards
 - point, non-point [linear/spatial]
 - existing and potential
 - Assess Risk
 - type of contaminant
 - proximity to well
 - Rate Risk
 - low, medium, high
 - priority ranking



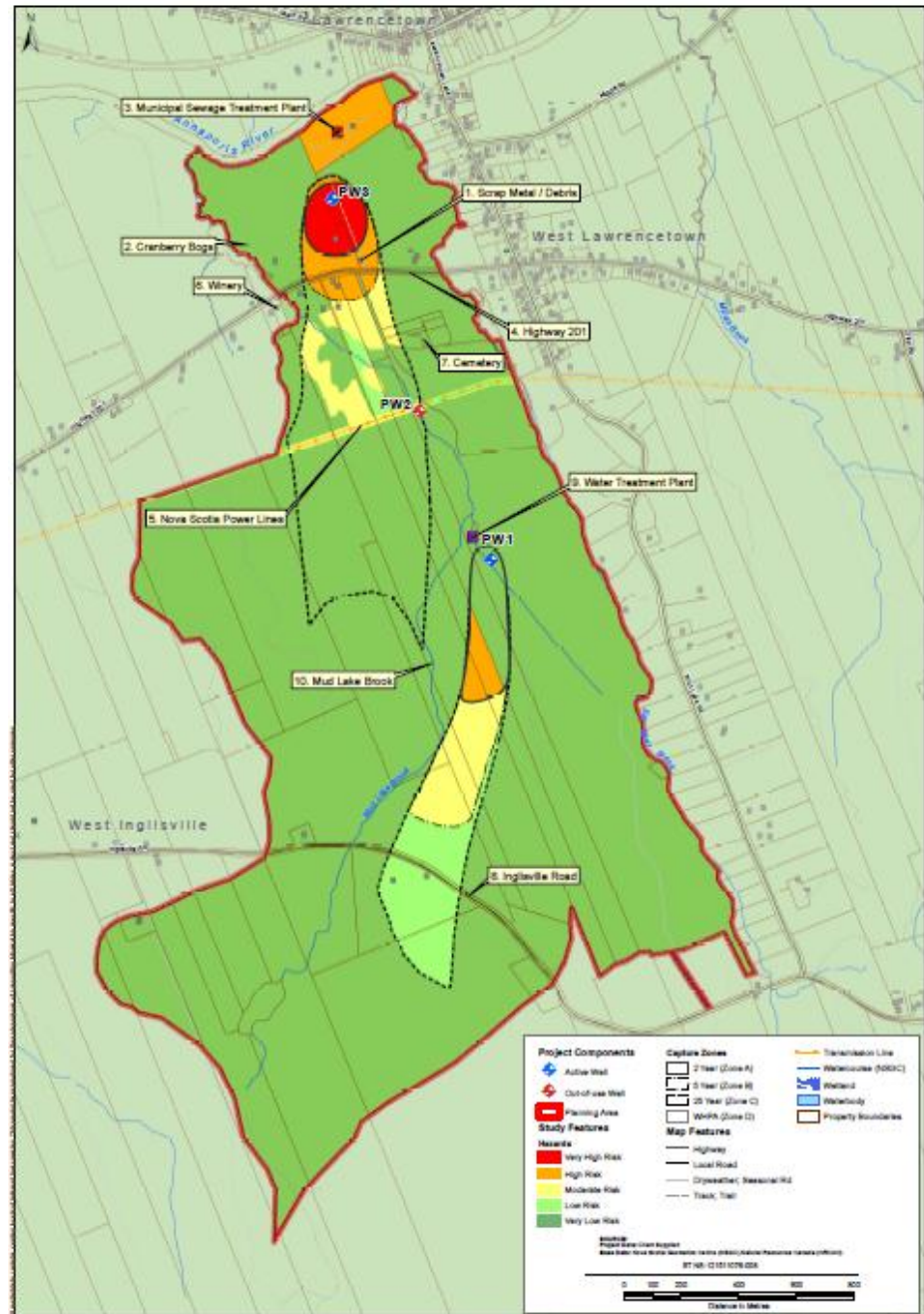
Author: K. Taylor	Village of Lawrenceton Source Water Protection Plan Land Use	Sheet: 6
Reviewer: M. Hoyle		Date: Oct 31, 2023
Scale:		





NSE Guidelines

- **Step 3 – Identify & Assess Risks**
 - Land ownership, development patterns and land use
 - Update Land Use Inventory (GIS Mapping)
 - Identify Hazards
 - point, non-point [linear/spatial]
 - existing and potential
 - Assess Risk
 - type of contaminant
 - proximity to well
 - Rate Risk
 - low, medium, high
 - priority ranking



Prepared by:	K. Sybil
Reviewed by:	C. Stojak
Date:	

Village of Lawrence town Source Water Protection Plan	
Hazards	

Version:	0
Date:	Oct 31, 2012



NSE Guidelines

- **Step 4 – Management Plan**
 - Develop technically sound and achievable groundwater protection management goals and objectives
 - SWPP Committee Workshop
 - Review Risks and Hazards
 - Identify Management Objectives
 - Identify Management Options
 - Establish Priorities based on risk
 - **Public Meeting**



NSE Guidelines

- **Step 5 – Monitor Results and Evaluate Plan**
 - Evaluate effectiveness of protection plan
 - Contingency Plans



Questions?

We value your input.